



NATA LIGHTING CO.,LTD.
www.nata.cn
Email:info@nata.com
Tel:+86-750-3770000 Fax:+86-750-3771111
Address:380JinOu Road,GaoXin Zone,Jiang Men City,Guangdong,China

NT

Client:

LumCAT: 1-1207-L

Luminaire: 92.70.410.00

Report No: 2024802-B018

Ballast type: AC

Test No: 2024802-C018

Voltage(V): 34.820

LampCAT: Fortimo_SLM_C_1204

Current(A): 0.321

Lamp flux(lm): 1868.0

Power (W): 11.177

Number of Lamps: 1

PF: 0.000

Length(mm): 0

Width(mm): 0

Phm Type: C

Height(mm): 0

Photometric Results

Lumens(lm): 1710.77, Efficiency(%): 91.58% , Luminous Efficacy(lm/W): 153.06

Central intensity(cd): 5417.048, Maximum intensity(cd): 5417.048

Angle of maximum intensity: C=0.0 γ =0.0

Beam Angle(50%Imax): [C0/180]Total=28.2

[C90/270]Total=28.2

Field angle(10%Imax): [C0/180]Total=59.0

[C90/270]Total=59.0

Maximum s/h(1/2): C0_180=0.47 C90_270=0.47

Maximum s/h(1/4): C0_180=0.46 C90_270=0.46

Up flux rate of lamp(%): 0.00%

Down flux rate of lamp(%): 91.58%

Up flux rate of LUM(%): - -

Down flux rate of LUM(%): 100.00%

CIE Type : Direct lighting

Output flux ratio in π solid angle : 98.028%

Equipment: GMS1980
Temperature(°C): 25.0

Date: 2024/8/02
Humidity(%): 60.0%

Operator: NT07
Distance(m): 7.65

$\gamma(^{\circ})$	Average I(cd)	Zonal F(lm)	Sum F(lm)	Eff Flux(%)	Eff Sum(%)
0.0	5417.047	0.000	0	0.00%	0.00%
1.0	5412.366	5.182	5.182	0.28%	0.30%
2.0	5373.009	15.480	20.662	0.83%	1.21%
3.0	5305.123	25.539	46.2	1.37%	2.70%
4.0	5215.511	35.216	81.416	1.89%	4.76%
5.0	5081.714	44.298	125.715	2.37%	7.35%
6.0	4920.996	52.567	178.281	2.81%	10.42%
7.0	4728.311	59.893	238.174	3.21%	13.92%
8.0	4497.293	66.026	304.2	3.53%	17.78%
9.0	4251.938	70.908	375.108	3.80%	21.93%
10.0	3963.056	74.343	449.451	3.98%	26.27%
11.0	3680.100	76.371	525.822	4.09%	30.74%
12.0	3352.008	76.871	602.693	4.12%	35.23%
13.0	3048.496	75.958	678.651	4.07%	39.67%
14.0	2731.523	73.984	752.634	3.96%	43.99%
15.0	2431.156	70.876	823.51	3.79%	48.14%
16.0	2134.301	66.897	890.407	3.58%	52.05%
17.0	1866.634	62.305	952.712	3.34%	55.69%
18.0	1594.255	57.063	1009.774	3.05%	59.02%
19.0	1369.931	51.571	1061.345	2.76%	62.04%
20.0	1268.490	48.290	1109.636	2.59%	64.86%
21.0	1164.408	46.717	1156.352	2.50%	67.59%
22.0	1062.827	44.757	1201.109	2.40%	70.21%
23.0	979.447	42.852	1243.962	2.29%	72.71%
24.0	911.166	41.336	1285.297	2.21%	75.13%
25.0	848.913	40.020	1325.318	2.14%	77.47%
26.0	786.959	38.615	1363.933	2.07%	79.73%
27.0	722.797	36.937	1400.869	1.98%	81.89%
28.0	652.679	34.824	1435.693	1.86%	83.92%
29.0	576.483	32.158	1467.852	1.72%	85.80%
30.0	501.011	29.092	1496.944	1.56%	87.50%
31.0	424.903	25.767	1522.711	1.38%	89.01%
32.0	351.493	22.243	1544.954	1.19%	90.31%
33.0	287.250	18.818	1563.771	1.01%	91.41%
34.0	241.683	16.007	1579.778	0.86%	92.34%
35.0	197.477	13.639	1593.417	0.73%	93.14%
36.0	130.644	10.447	1603.864	0.56%	93.75%
37.0	98.983	7.489	1611.354	0.40%	94.19%

$\gamma(^{\circ})$	Average I(cd)	Zonal F(lm)	Sum F(lm)	Eff Flux(%)	Eff Sum(%)
38.0	81.763	6.033	1617.387	0.32%	94.54%
39.0	71.229	5.222	1622.609	0.28%	94.85%
40.0	63.870	4.712	1627.32	0.25%	95.12%
41.0	57.272	4.314	1631.634	0.23%	95.37%
42.0	51.997	3.970	1635.604	0.21%	95.61%
43.0	47.213	3.675	1639.279	0.20%	95.82%
44.0	43.014	3.405	1642.685	0.18%	96.02%
45.0	39.247	3.161	1645.846	0.17%	96.20%
46.0	35.633	2.928	1648.774	0.16%	96.38%
47.0	32.663	2.716	1651.491	0.15%	96.53%
48.0	30.095	2.537	1654.028	0.14%	96.68%
49.0	27.981	2.385	1656.413	0.13%	96.82%
50.0	26.130	2.256	1658.669	0.12%	96.95%
51.0	24.645	2.148	1660.817	0.12%	97.08%
52.0	23.336	2.059	1662.876	0.11%	97.20%
53.0	22.143	1.978	1664.854	0.11%	97.32%
54.0	21.222	1.911	1666.766	0.10%	97.43%
55.0	20.220	1.850	1668.615	0.10%	97.54%
56.0	19.386	1.790	1670.405	0.10%	97.64%
57.0	18.566	1.735	1672.14	0.09%	97.74%
58.0	17.805	1.682	1673.822	0.09%	97.84%
59.0	17.052	1.630	1675.452	0.09%	97.94%
60.0	16.401	1.580	1677.032	0.08%	98.03%
61.0	15.801	1.537	1678.569	0.08%	98.12%
62.0	15.172	1.492	1680.062	0.08%	98.20%
63.0	14.667	1.451	1681.513	0.08%	98.29%
64.0	14.148	1.414	1682.927	0.08%	98.37%
65.0	13.680	1.377	1684.304	0.07%	98.45%
66.0	13.219	1.342	1685.646	0.07%	98.53%
67.0	12.758	1.306	1686.952	0.07%	98.61%
68.0	12.356	1.272	1688.224	0.07%	98.68%
69.0	11.990	1.242	1689.466	0.07%	98.75%
70.0	11.690	1.216	1690.682	0.07%	98.83%
71.0	11.397	1.193	1691.876	0.06%	98.90%
72.0	11.149	1.172	1693.048	0.06%	98.96%
73.0	10.878	1.152	1694.2	0.06%	99.03%
74.0	10.629	1.131	1695.331	0.06%	99.10%
75.0	10.388	1.110	1696.441	0.06%	99.16%

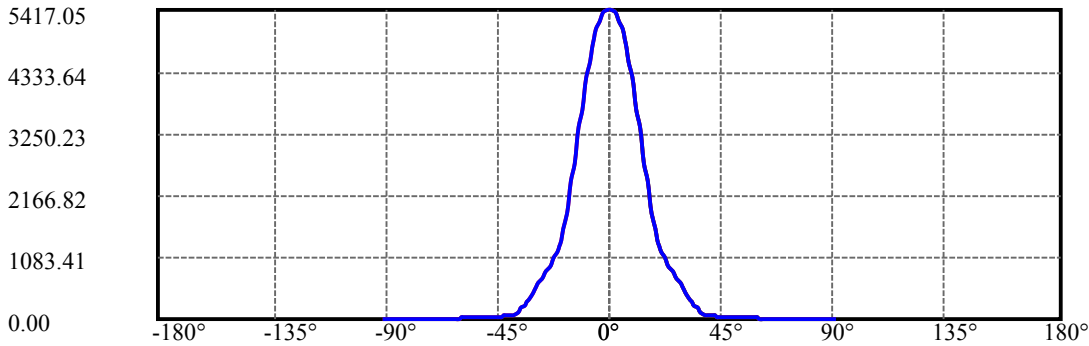
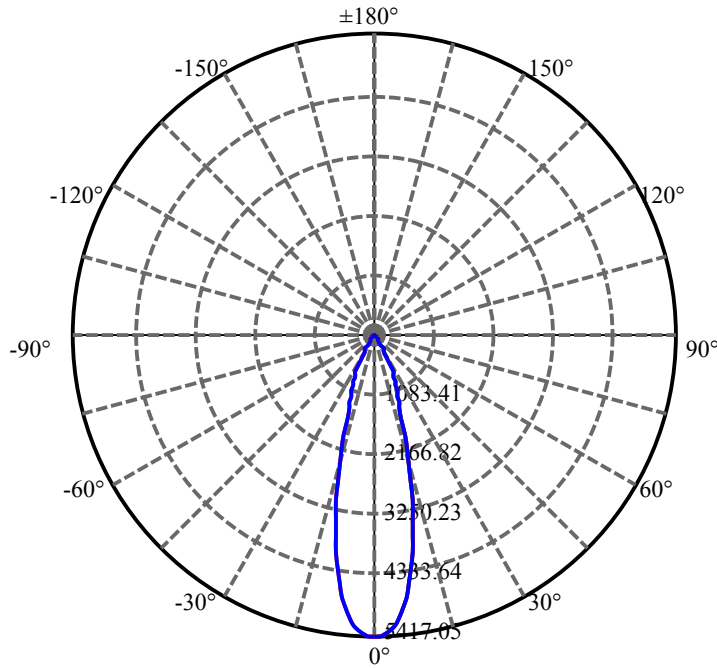
$\gamma(^{\circ})$	Average I(cd)	Zonal F(lm)	Sum F(lm)	Eff Flux(%)	Eff Sum(%)
76.0	10.139	1.090	1697.531	0.06%	99.23%
77.0	9.890	1.068	1698.598	0.06%	99.29%
78.0	9.664	1.047	1699.645	0.06%	99.35%
79.0	9.444	1.027	1700.672	0.05%	99.41%
80.0	9.254	1.008	1701.68	0.05%	99.47%
81.0	9.064	0.991	1702.67	0.05%	99.53%
82.0	8.859	0.972	1703.642	0.05%	99.58%
83.0	8.691	0.954	1704.596	0.05%	99.64%
84.0	8.486	0.936	1705.532	0.05%	99.69%
85.0	8.310	0.917	1706.449	0.05%	99.75%
86.0	8.149	0.900	1707.349	0.05%	99.80%
87.0	7.988	0.883	1708.232	0.05%	99.85%
88.0	7.813	0.866	1709.097	0.05%	99.90%
89.0	7.608	0.845	1709.942	0.05%	99.95%
90.0	7.498	0.828	1710.771	0.04%	100.00%

ZONAL LUMEN SUMMARY

Zone	Lumens	%Lamp	%Fixt
0-30	1496.94	80.14%	87.50%
0-40	1627.32	87.12%	95.12%
0-60	1677.03	89.78%	98.03%
0-90	1709.94	91.54%	99.95%
0-120	1709.94	91.54%	99.95%
0-180	1710.77	91.58%	100.00%
60-90	32.91	1.76%	1.92%
90-120	0.00	0.00%	0.00%
90-130	0.00	0.00%	0.00%
90-150	0.00	0.00%	0.00%
90-180	0.00	0.00%	0.00%
0-26.13	1368.62	73.27%	80.00%

ZONAL LUMEN SUMMARY

0-10	449.45
10-20	660.18
20-30	387.31
30-40	130.38
40-50	31.35
50-60	18.36
60-70	13.65
70-80	11.00
80-90	8.26
90-100	0.00
100-110	0.00
110-120	0.00
120-130	0.00
130-140	0.00
140-150	0.00
150-160	0.00
160-170	0.00
170-180	0.00



C0(Max): ———

C0/C180: ———

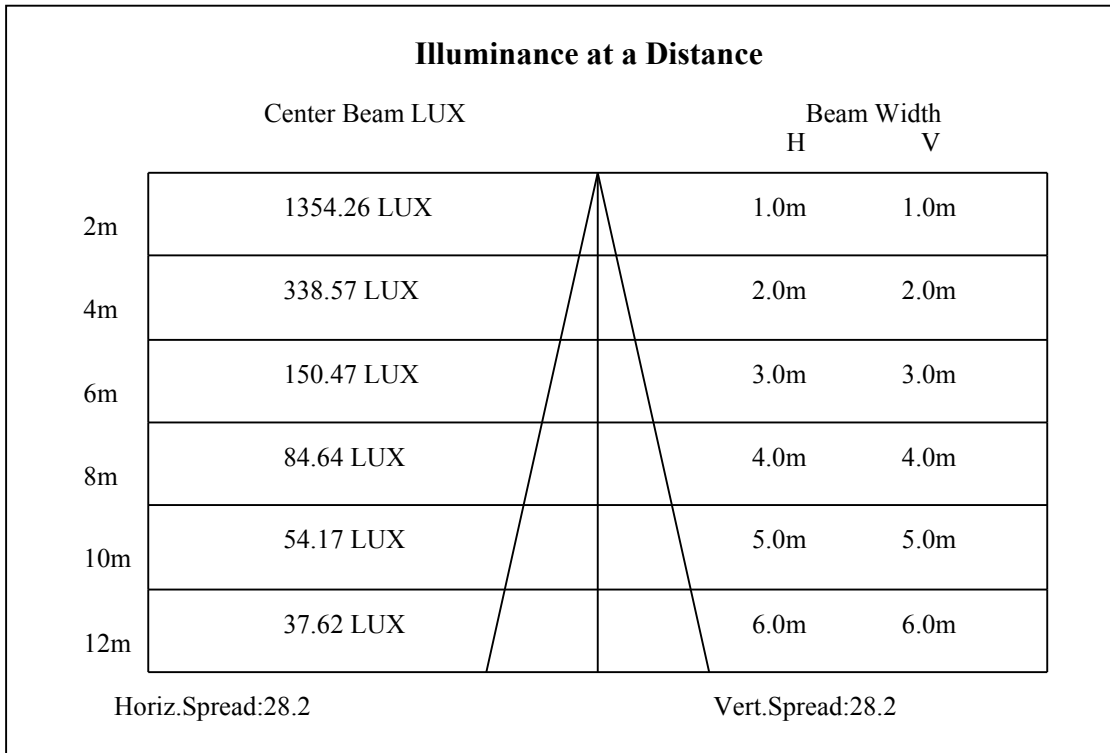
C90/C270: ———

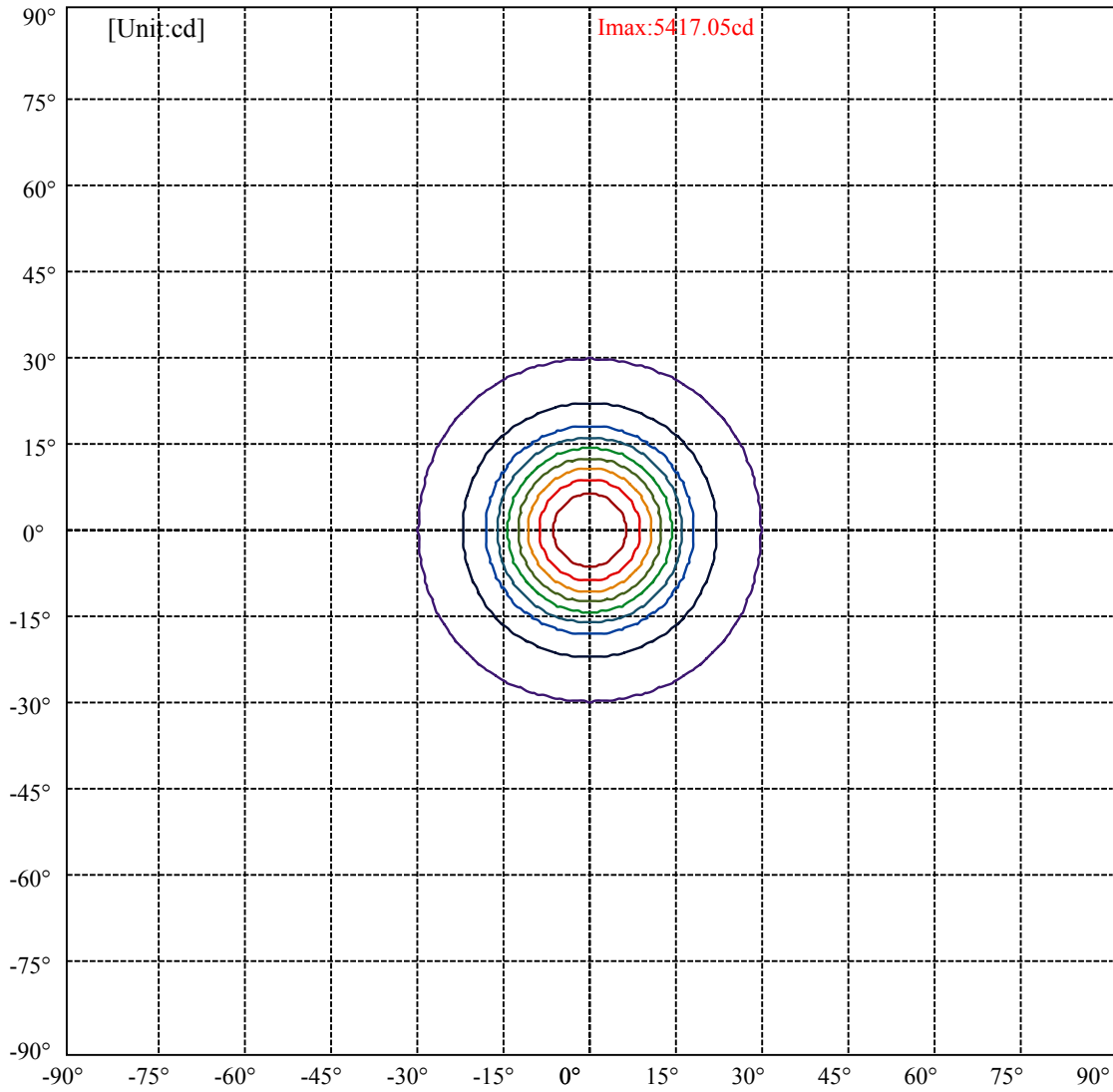
Field angle(10%Imax):C0/180Left:29.5 Right:29.5

:C90/270Left:29.5 Right:29.5

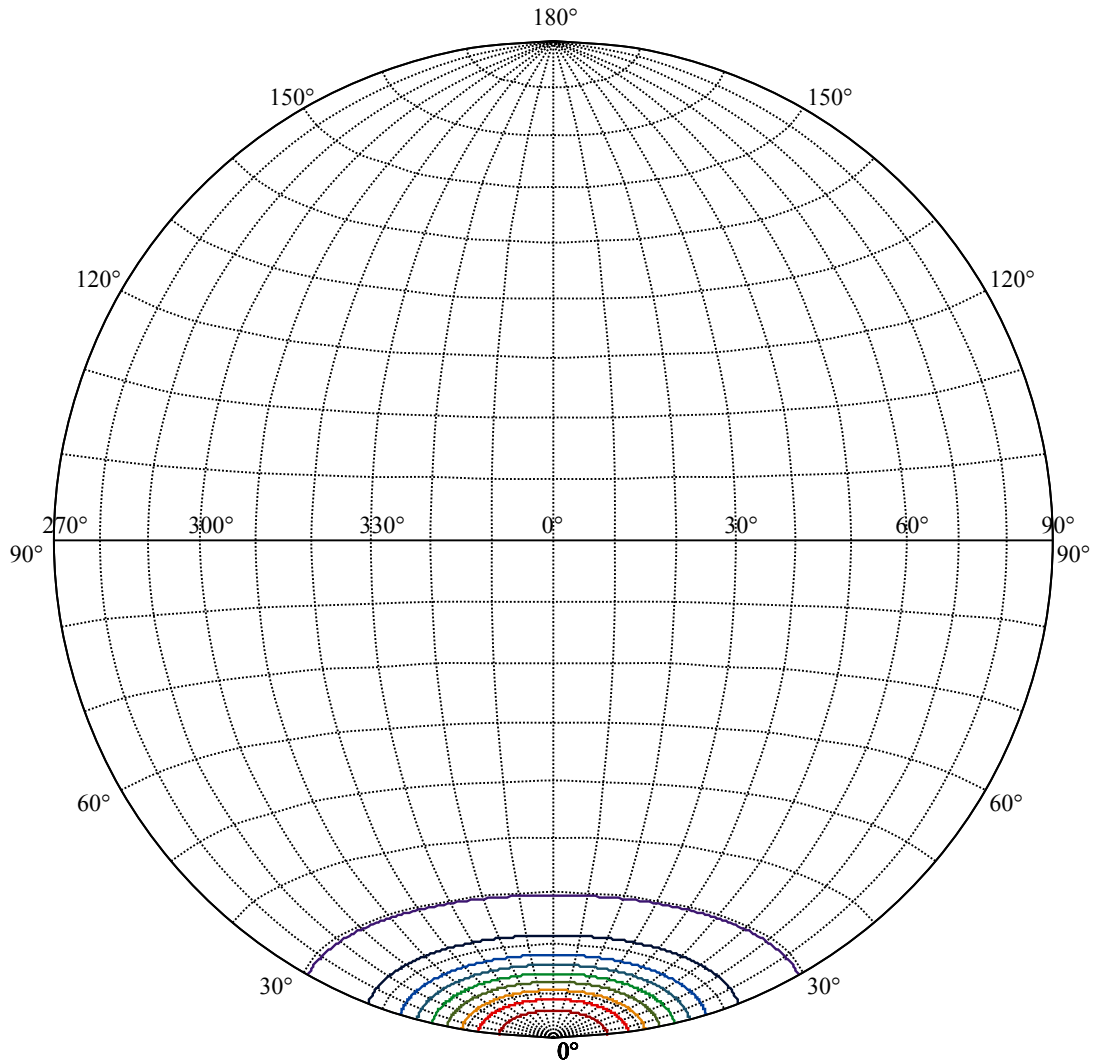
Beam Angle(50%Imax):C0/180Left:14.1 Right:14.1

:C90/270Left:14.1 Right:14.1





(10%Imax) 541.705	—
(20%Imax) 1083.41	—
(30%Imax) 1625.11	—
(40%Imax) 2166.82	—
(50%Imax) 2708.52	—
(60%Imax) 3250.23	—
(70%Imax) 3791.93	—
(80%Imax) 4333.64	—
(90%Imax) 4875.34	—



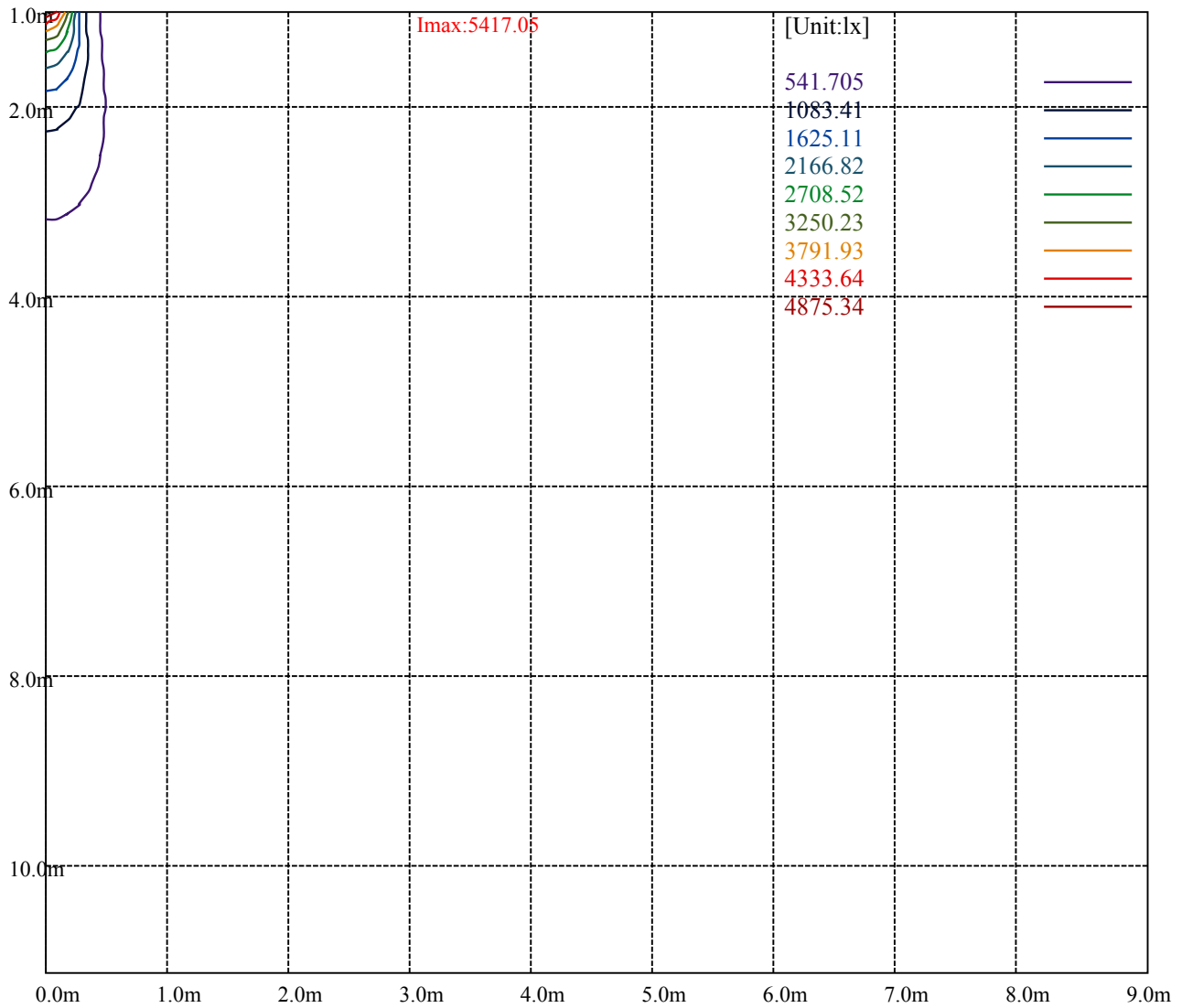
House

[Unit:cd]

Road

Imax:5417.05

(10%Imax) 541.705	—
(20%Imax) 1083.41	—
(30%Imax) 1625.11	—
(40%Imax) 2166.82	—
(50%Imax) 2708.52	—
(60%Imax) 3250.23	—
(70%Imax) 3791.93	—
(80%Imax) 4333.64	—
(90%Imax) 4875.34	—



Luminance Table

γ	45	50	55	60	65	70	75	80	85
C0	0	0	0	0	0	0	0	0	0
C45	0	0	0	0	0	0	0	0	0
C90	0	0	0	0	0	0	0	0	0

L(Hor)(65)	L(Ver)(65)	L45(65)	L(Hor)(75)	L(Ver)(75)	L45(75)	L(Hor)(85)	L(Ver)(85)	L45(85)
0	0	0	0	0	0	0	0	0

Glare Table

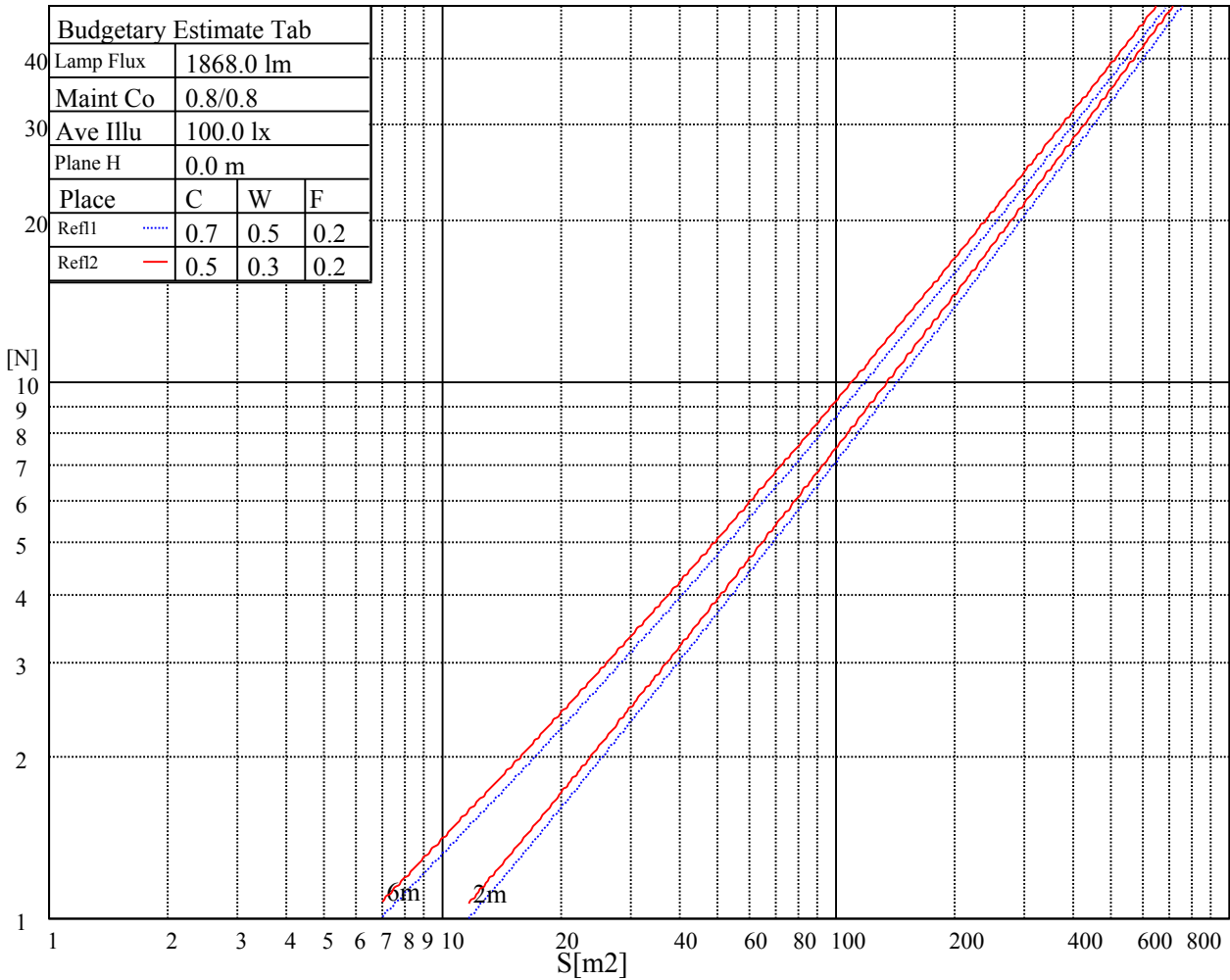
Glare	Quality	Service Values Illuminance(lx)							
1.15	A	2000	1000	500	<=300				
1.5	B		2000	1000	500	<=300			
1.85	C			2000	1000	500	<=300		
2.2	D				2000	1000	500	<=300	
2.55	E					2000	1000	500	<=300
		a	b	c	d	e	f	g	h

Luminance Limiting Curve

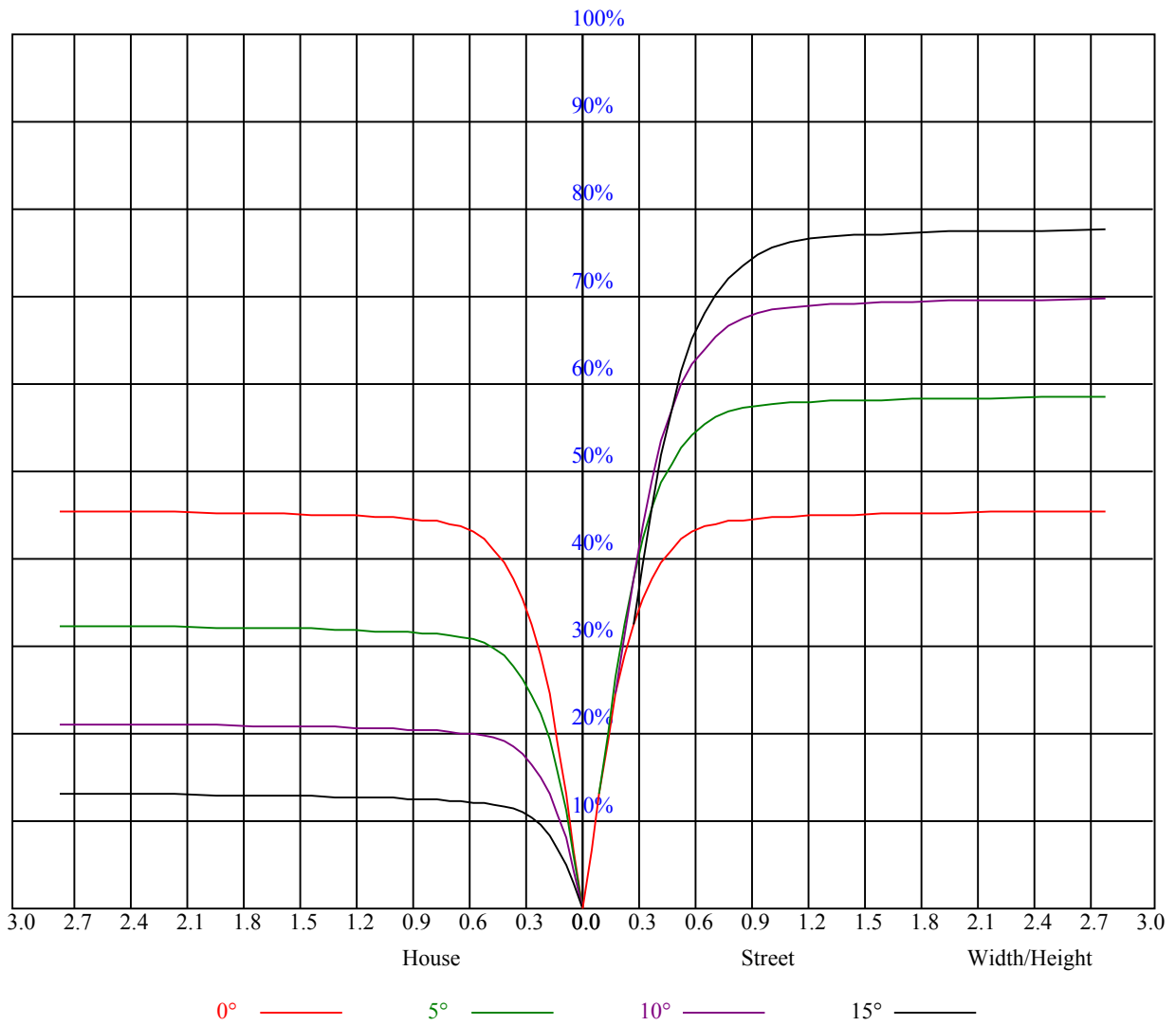


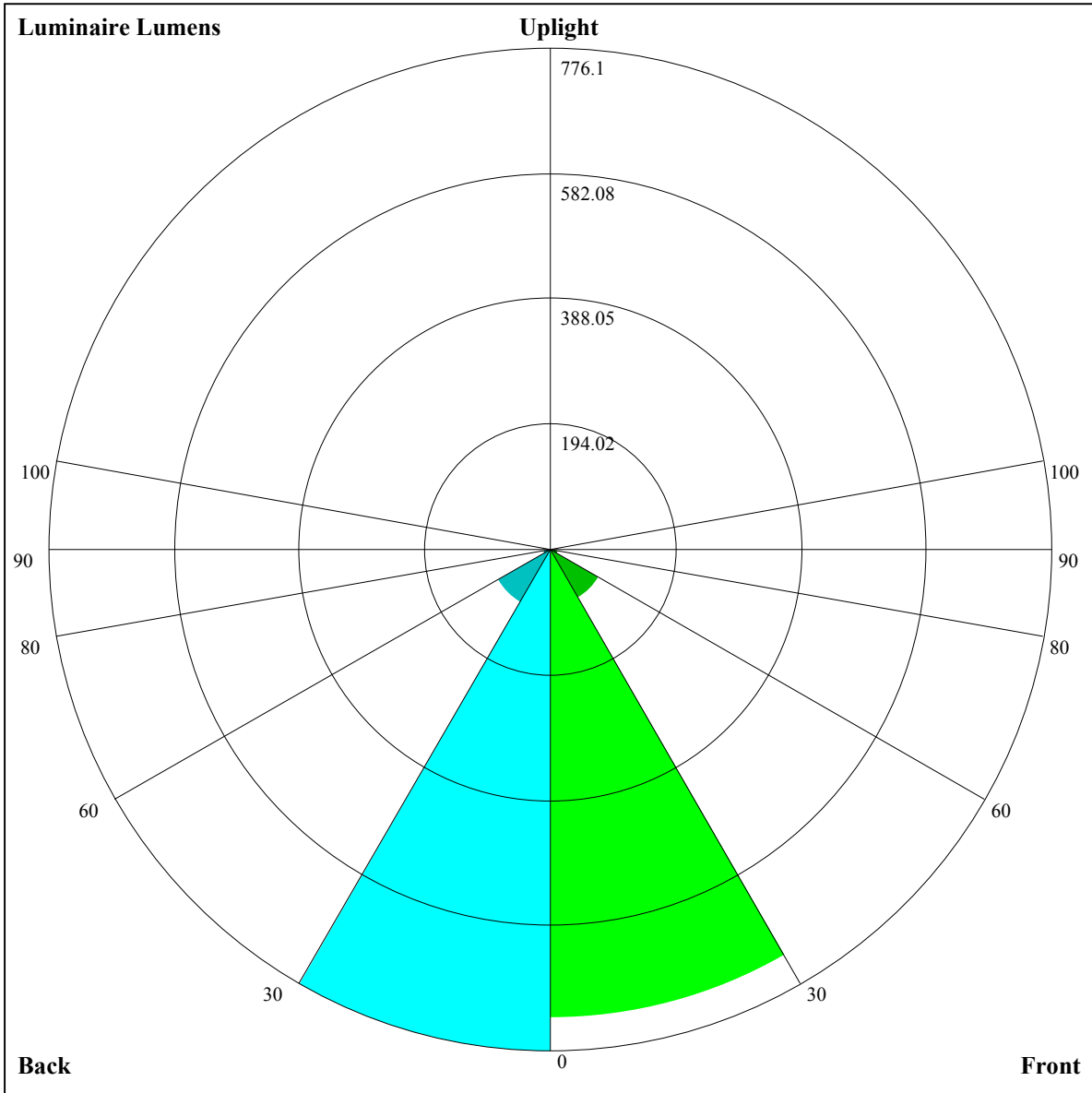
Illumination assessment according UGR											
Rf of Ceiling	70	70	50	50	30	70	70	50	50	30	
Rf of Wall	50	30	50	30	30	50	30	50	30	30	
Rf of Floor	20	20	20	20	20	20	20	20	20	20	
Room dimensions		Viewed crosswise					Viewed endwise				
X	Y										
2H	2H	非数字	非数字	非数字	非数字	非数字	非数字	非数字	非数字	非数字	
	3H	非数字	非数字	非数字	非数字	非数字	非数字	非数字	非数字	非数字	
	4H	非数字	非数字	非数字	非数字	非数字	非数字	非数字	非数字	非数字	
	6H	非数字	非数字	非数字	非数字	非数字	非数字	非数字	非数字	非数字	
	8H	非数字	非数字	非数字	非数字	非数字	非数字	非数字	非数字	非数字	
4H	12H	非数字	非数字	非数字	非数字	非数字	非数字	非数字	非数字	非数字	
	2H	非数字	非数字	非数字	非数字	非数字	非数字	非数字	非数字	非数字	
	3H	非数字	非数字	非数字	非数字	非数字	非数字	非数字	非数字	非数字	
	4H	非数字	非数字	非数字	非数字	非数字	非数字	非数字	非数字	非数字	
	6H	非数字	非数字	非数字	非数字	非数字	非数字	非数字	非数字	非数字	
8H	8H	非数字	非数字	非数字	非数字	非数字	非数字	非数字	非数字	非数字	
	12H	非数字	非数字	非数字	非数字	非数字	非数字	非数字	非数字	非数字	
	4H	非数字	非数字	非数字	非数字	非数字	非数字	非数字	非数字	非数字	
	6H	非数字	非数字	非数字	非数字	非数字	非数字	非数字	非数字	非数字	
	8H	非数字	非数字	非数字	非数字	非数字	非数字	非数字	非数字	非数字	
12H	12H	非数字	非数字	非数字	非数字	非数字	非数字	非数字	非数字	非数字	
	4H	非数字	非数字	非数字	非数字	非数字	非数字	非数字	非数字	非数字	
	6H	非数字	非数字	非数字	非数字	非数字	非数字	非数字	非数字	非数字	
8H	非数字	非数字	非数字	非数字	非数字	非数字	非数字	非数字	非数字		
Variation with the observer position at spacings:											
S = 1.0H		非数字/非数字					非数字/非数字				
S = 1.5H		非数字/非数字					非数字/非数字				
S = 2.0H		非数字/非数字					非数字/非数字				
Standard tables:		BK0					BK0				
Uncorrected UGR		负无穷大					负无穷大				

UGR calculation is based on CIE Publ. 117 ,S/H = 0.25



RHOCC	80			70			50			30			10			0
RHOW	50	30	10	50	30	10	50	30	10	50	30	10	50	30	10	0
RCR	COEFFICIENTS OF UTILIZATION RHOF=20 CU															
0	1.09	1.09	1.09	1.06	1.06	1.06	1.02	1.02	1.02	0.97	0.97	0.97	0.93	0.93	0.93	0.92
1	1.02	1.00	0.98	1.00	0.98	0.97	0.97	0.95	0.94	0.93	0.92	0.91	0.90	0.89	0.88	0.87
2	0.96	0.93	0.91	0.95	0.92	0.90	0.92	0.90	0.88	0.89	0.87	0.86	0.87	0.85	0.84	0.83
3	0.91	0.88	0.84	0.90	0.87	0.84	0.88	0.85	0.83	0.86	0.83	0.81	0.84	0.82	0.80	0.79
4	0.87	0.83	0.80	0.86	0.82	0.79	0.84	0.81	0.78	0.82	0.80	0.77	0.81	0.78	0.76	0.75
5	0.83	0.79	0.75	0.82	0.78	0.75	0.81	0.77	0.74	0.79	0.76	0.74	0.78	0.75	0.73	0.72
6	0.80	0.75	0.72	0.79	0.75	0.72	0.78	0.74	0.71	0.76	0.73	0.71	0.75	0.72	0.70	0.69
7	0.76	0.72	0.69	0.76	0.72	0.69	0.75	0.71	0.68	0.74	0.70	0.68	0.73	0.70	0.67	0.66
8	0.73	0.69	0.66	0.73	0.69	0.66	0.72	0.68	0.65	0.71	0.68	0.65	0.70	0.67	0.65	0.64
9	0.71	0.66	0.63	0.70	0.66	0.63	0.69	0.66	0.63	0.69	0.65	0.63	0.68	0.65	0.63	0.62
10	0.68	0.64	0.61	0.68	0.64	0.61	0.67	0.63	0.61	0.66	0.63	0.61	0.66	0.63	0.61	0.60





Luminaire Lumens:

FL=725.29,FM=85.27,FH=12.19,FVH=4.5

BL=776.1,BM=95.56,BH=12.46,BVH=4.57

UL=0,UH=0

BUG Rating:B2-U0-G0

Intensity data(cd)

C/γ(°)	0.0	1.0	2.0	3.0	4.0	5.0	6.0	7.0	8.0
0.0	5406.95	5367.74	5282.30	5171.69	4998.47	4800.66	4609.29	4386.91	4087.27
45.0	5405.78	5433.29	5428.02	5378.86	5301.61	5176.96	5038.85	4836.94	4634.46
90.0	5446.75	5458.45	5444.99	5384.71	5305.71	5171.11	5030.65	4867.96	4621.58
135.0	5408.71	5440.90	5444.41	5432.12	5387.05	5273.52	5149.45	4982.66	4744.48
180.0	5406.95	5417.49	5394.66	5348.43	5294.59	5172.28	5028.90	4853.91	4642.06
225.0	5405.78	5374.18	5320.34	5233.73	5141.85	5008.41	4825.82	4624.51	4398.02
270.0	5446.75	5427.44	5385.30	5314.49	5249.53	5160.57	5042.94	4856.84	4676.59
315.0	5408.71	5379.45	5284.06	5176.96	5045.28	4890.20	4642.06	4416.75	4173.88
360.0	5406.95	5367.74	5282.30	5171.69	4998.47	4800.66	4609.29	4386.91	4087.27
C/γ(°)	9.0	10.0	11.0	12.0	13.0	14.0	15.0	16.0	17.0
0.0	3821.58	3548.28	3258.59	2877.02	2582.66	2226.25	1968.76	1742.27	1514.04
45.0	4417.34	4177.39	3844.40	3535.99	3227.57	2833.72	2527.06	2224.50	1887.41
90.0	4384.56	4053.33	3749.60	3425.97	3109.36	2793.92	2391.29	2088.73	1825.96
135.0	4527.94	4289.76	4048.06	3720.92	3442.35	3154.42	2858.30	2492.53	2201.09
180.0	4331.31	4066.79	3785.88	3516.68	3177.83	2916.23	2657.57	2332.18	2081.70
225.0	4152.82	3827.43	3561.74	3267.95	2964.22	2608.99	2348.57	2090.48	1789.68
270.0	4455.96	4159.84	3898.83	3540.67	3245.13	2949.01	2658.15	2308.19	2044.25
315.0	3923.99	3581.64	3293.70	2930.87	2638.84	2369.63	2039.57	1795.53	1588.94
360.0	3821.58	3548.28	3258.59	2877.02	2582.66	2226.25	1968.76	1742.27	1514.04
C/γ(°)	18.0	19.0	20.0	21.0	22.0	23.0	24.0	25.0	26.0
0.0	1161.26	1161.26	1137.74	1052.29	967.79	915.35	863.27	801.00	744.93
45.0	1669.12	1491.21	1317.40	1206.21	1114.91	1037.66	947.54	889.02	832.83
90.0	1608.84	1163.31	1163.31	1138.50	1023.38	945.43	877.72	812.76	761.44
135.0	1940.08	1667.36	1484.77	1302.18	1190.99	1096.18	1013.67	938.17	884.92
180.0	1841.76	1593.04	1427.42	1295.16	1172.85	1080.97	1004.30	939.34	862.09
225.0	1584.85	1161.61	1161.61	1110.58	1022.33	927.17	869.00	815.98	760.68
270.0	1794.36	1567.88	1326.76	1175.78	1066.92	947.54	884.92	821.13	753.24
315.0	1153.77	1153.77	1128.90	1034.56	943.44	885.27	828.91	773.90	695.54
360.0	1161.26	1161.26	1137.74	1052.29	967.79	915.35	863.27	801.00	744.93
C/γ(°)	27.0	28.0	29.0	30.0	31.0	32.0	33.0	34.0	35.0
0.0	675.23	602.90	513.42	441.67	371.68	288.63	228.12	162.87	123.72
45.0	780.75	701.16	633.86	561.87	472.34	402.11	316.67	301.45	301.45
90.0	685.18	619.58	550.29	481.23	397.60	333.11	273.07	216.24	155.14
135.0	832.25	774.31	689.45	615.13	542.56	468.82	383.38	317.25	302.03
180.0	809.42	749.73	680.68	585.28	512.72	440.15	351.78	304.38	304.38
225.0	682.43	610.39	535.19	459.93	372.50	306.19	245.44	179.49	135.07
270.0	688.28	604.60	538.47	463.56	398.60	317.84	302.03	302.03	149.99
315.0	628.82	558.77	470.52	399.42	331.24	255.10	197.51	149.76	108.03
360.0	675.23	602.90	513.42	441.67	371.68	288.63	228.12	162.87	123.72
C/γ(°)	36.0	37.0	38.0	39.0	40.0	41.0	42.0	43.0	44.0
0.0	99.61	86.67	76.02	68.71	62.91	58.00	52.38	48.22	44.18
45.0	145.66	105.63	87.26	76.90	69.17	61.39	56.30	51.68	46.58
90.0	118.45	93.81	79.53	68.88	62.27	56.71	50.91	47.17	42.25
135.0	228.30	139.69	104.87	89.07	78.42	68.35	61.51	56.06	51.27
180.0	161.29	124.48	95.27	81.17	71.46	63.44	56.94	50.21	45.59
225.0	96.74	79.59	69.64	59.87	53.43	48.22	43.89	39.15	35.87
270.0	106.45	84.27	71.51	63.44	57.12	50.68	46.58	42.43	39.33
315.0	88.66	77.72	69.99	61.80	56.18	51.38	47.46	42.78	39.03
360.0	99.61	86.67	76.02	68.71	62.91	58.00	52.38	48.22	44.18

Intensity data(cd)

C/γ(°)	45.0	46.0	47.0	48.0	49.0	50.0	51.0	52.0	53.0
0.0	40.38	36.34	33.83	31.02	29.09	27.39	25.52	24.23	23.00
45.0	42.78	38.98	35.58	32.07	29.79	27.21	25.52	23.99	22.24
90.0	38.45	34.94	32.30	29.67	27.51	25.52	23.94	22.18	21.07
135.0	46.00	41.90	37.98	34.65	31.37	29.09	27.10	25.05	23.64
180.0	41.67	38.04	33.88	31.25	28.97	26.69	25.28	23.94	22.53
225.0	32.89	30.14	27.51	25.98	24.64	23.23	22.41	21.71	20.89
270.0	36.34	32.66	30.37	28.62	26.74	25.57	24.70	24.05	23.23
315.0	35.46	32.07	29.85	27.51	25.75	24.35	22.71	21.54	20.54
360.0	40.38	36.34	33.83	31.02	29.09	27.39	25.52	24.23	23.00
C/γ(°)	54.0	55.0	56.0	57.0	58.0	59.0	60.0	61.0	62.0
0.0	21.89	20.60	19.66	18.84	18.08	17.21	16.68	16.09	15.51
45.0	21.13	20.07	19.14	18.08	17.38	16.68	16.04	15.33	14.75
90.0	20.01	18.61	17.79	17.03	16.39	15.80	15.33	14.75	14.22
135.0	22.41	21.01	20.07	19.20	18.14	17.38	16.74	16.15	15.39
180.0	21.65	20.72	19.96	19.20	18.49	17.67	17.03	16.39	15.86
225.0	20.42	19.90	19.20	18.55	17.85	17.09	16.21	15.68	15.10
270.0	22.71	22.12	21.48	20.48	19.61	18.79	17.85	17.15	16.21
315.0	19.55	18.73	17.79	17.15	16.50	15.80	15.33	14.86	14.34
360.0	21.89	20.60	19.66	18.84	18.08	17.21	16.68	16.09	15.51
C/γ(°)	63.0	64.0	65.0	66.0	67.0	68.0	69.0	70.0	71.0
0.0	15.04	14.57	13.99	13.52	12.93	12.47	12.17	11.88	11.59
45.0	14.28	13.81	13.40	13.05	12.58	12.23	11.94	11.59	11.29
90.0	13.81	13.40	13.05	12.70	12.41	12.06	11.70	11.41	11.18
135.0	14.92	14.46	14.05	13.58	13.17	12.76	12.29	11.94	11.59
180.0	15.27	14.75	14.34	13.87	13.40	12.99	12.58	12.35	11.94
225.0	14.51	13.87	13.40	12.93	12.41	12.06	11.70	11.47	11.24
270.0	15.57	14.86	14.34	13.64	13.11	12.58	12.11	11.70	11.47
315.0	13.93	13.46	12.87	12.47	12.06	11.70	11.41	11.18	10.89
360.0	15.04	14.57	13.99	13.52	12.93	12.47	12.17	11.88	11.59
C/γ(°)	72.0	73.0	74.0	75.0	76.0	77.0	78.0	79.0	80.0
0.0	11.24	11.00	10.77	10.48	10.24	10.01	9.77	9.54	9.42
45.0	11.06	10.83	10.53	10.30	10.07	9.83	9.54	9.36	9.13
90.0	10.89	10.59	10.36	10.12	9.89	9.60	9.42	9.19	9.01
135.0	11.35	11.12	10.83	10.53	10.36	10.12	9.89	9.66	9.42
180.0	11.70	11.47	11.18	11.00	10.71	10.42	10.24	10.01	9.83
225.0	11.06	10.71	10.53	10.30	10.07	9.77	9.60	9.42	9.19
270.0	11.24	10.89	10.65	10.42	10.12	9.89	9.60	9.36	9.19
315.0	10.65	10.42	10.18	9.95	9.66	9.48	9.25	9.01	8.84
360.0	11.24	11.00	10.77	10.48	10.24	10.01	9.77	9.54	9.42
C/γ(°)	81.0	82.0	83.0	84.0	85.0	86.0	87.0	88.0	89.0
0.0	9.19	9.07	8.84	8.66	8.49	8.37	8.19	8.02	7.49
45.0	8.95	8.78	8.60	8.43	8.25	8.08	7.96	7.84	7.67
90.0	8.78	8.54	8.43	8.19	8.08	7.90	7.78	7.61	7.49
135.0	9.25	8.95	8.78	8.54	8.37	8.19	8.02	7.84	7.67
180.0	9.66	9.42	9.25	8.95	8.78	8.54	8.43	8.13	8.02
225.0	9.01	8.84	8.66	8.49	8.25	8.13	7.90	7.78	7.55
270.0	9.01	8.78	8.60	8.43	8.25	8.08	7.90	7.72	7.55
315.0	8.66	8.49	8.37	8.19	8.02	7.90	7.72	7.55	7.43
360.0	9.19	9.07	8.84	8.66	8.49	8.37	8.19	8.02	7.49

Intensity data(cd)

C/γ(°)	90.0
0.0	7.55
45.0	7.49
90.0	7.43
135.0	7.55
180.0	7.61
225.0	7.49
270.0	7.43
315.0	7.43
360.0	7.55